

Automated Dewatering System

CHALLENGE

To automate the entire wastewater dewatering process of Wessuc, providing solutions to control their pumps, valves and monitor them through an iPad

PARTNER

Wessuc



Wessuc is one of Ontario's leading resources on municipal, industrial and agricultural wastewater infrastructure and processes, with a focus on turning waste into value.

TEAM

- Crosby Davidson, Director of Operations, Wessuc Inc.
- Dr. Tom Wanyama, Assistant Professor, McMaster University
- Aswin Cmohan, M. Eng. Manufacturing
- Anirudh Vijayameenakshi, M. Eng. Manufacturing

MILESTONES & OUTCOME

- Hardware selection and delivery of complete PLC software solution including simulation
- Remote monitoring and control of the process from an iPad through an OPC server and a suitable client

VALUE

Convenient, fast and sustainable automated dewatering process with real-time remote monitoring and control

NEXT STEPS

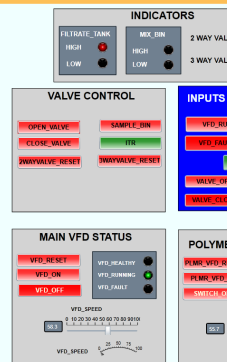
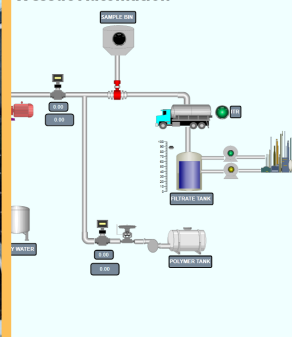
- Real-time Implementation
- Integration with MES to get insights and to monitor the process in an efficient way

STUDENT REFLECTION

- Acquired technical knowledge on device selection and programming
- Integrated devices of multi-vendor platforms to create a real-time monitoring and control of the process
- Collaborated and communicated efficiently with peers, professors and with the industrial partner



Wessuc Automation



Wessuc Automation

